

TP 9

TERRACE PEDESTAL



ArchiGreen Roof Ltd
 3 Patzay Pal Utca • Gyor • H-9024
 Website: www.archigreenroof.com
 E-mail: info@archigreenroof.com

TP 9 is a black heavy-duty round-shaped screwjack pedestal, with infinite height adjustability between 537 and 725 mm. It is made of UV-resistant copolymer polypropylene and talc is added to boost resistance against heat and acids. Its load bearing capacity reaches a stunning 1000 kg. It comprises three elements:

- The Top (PB-4 TOP, dia. 170 mm) is designed to accommodate 4 tabs (tab width: 2 or 4.5 mm) creating an open joint between paving slabs which is of particular importance on roof terraces where terrace tiles must be loose laid for proper drainage purposes.
- The Base (PB-4 BASE, dia. 197 mm) is designed to accommodate a slope corrector (TP-SC: 0 to 5%).
- The Extender (C1-PB-4, dia. 131 mm) is a threaded durable pipe designed to extend the pedestal and connect the Top to its Base. (Required quantity: 4 pieces)

Use

Usage of the TP 9 include:

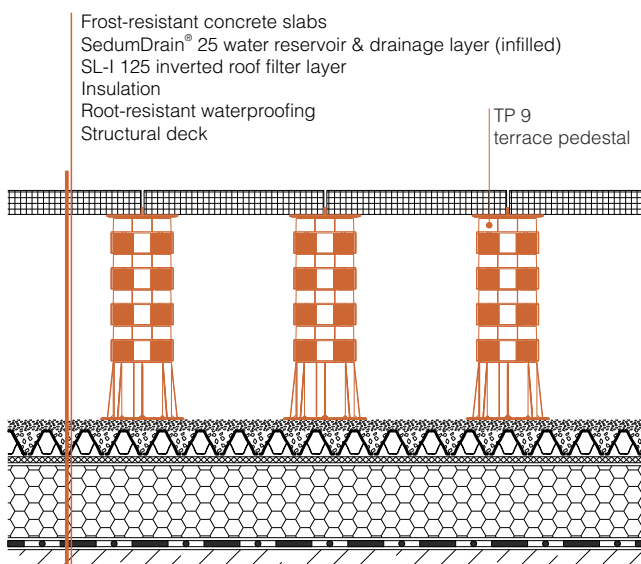
- Constructing external raised floors between 537 and 725 mm
- Enhancing drainage properties (German FLL Guidelines)
- Coupled with the slope corrector TP-SC (+ 12 mm in height), the pedestal can be used for levelling uneven surfaces
- Versatility - the TP range is designed to accommodate various clips and spacers in accordance with the materials used by the manufacturers of terrace construction units

Application area

TP 9 is designed to support green roof terraces made of any kind of material: timber, composite wood, concrete, metal etc. where requested height varies between 537 and 725 mm. It can be placed on any kind of stable substrate and also over insulation panels. Coupled with the tabs on top, it can provide permanent spacing between the slabs to encourage better drainage.

Size (L x W x H)	Dia. 197 x 537 - 725 mm
Weight	1.810 kg / pedestal
Material	Copolymer Polypropylene (CPP) (80%) Talc + UV black masterbatch (20 %)
Material thickness	3 - 4.5 mm
Max. load capacity	1,000 kg
Temperature range	-30 °C to +90 °C
Performance	Resistant to UV light, climate changes, sea salt and almost all chemicals.
Ancillary parts	Tabs (2.5 or 4 mm in thickness) TP-SC slope corrector (0 to 5%)
Environmental aspect	Fully recyclable

Installation example



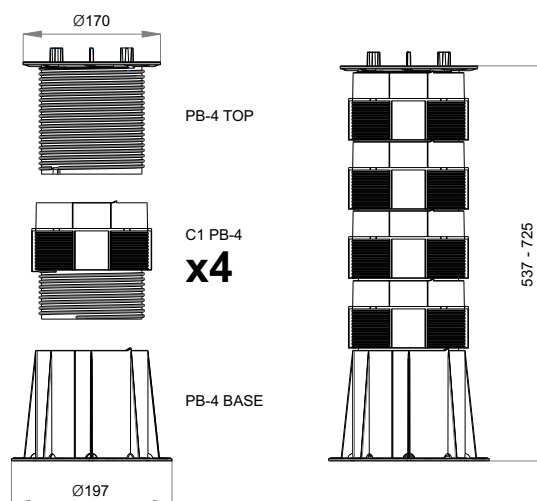
Specification suggestion

ArchiGreen® TP 9 screwjack terrace pedestal is made of UV-resistant copolymer polypropylene (CPP) and talc and is black in colour. Specifically designed to support outdoor green roof terraces. The TP 9 comprises three elements:

1. The Top (Ø 170 mm, surface area is 22,700 mm²) able to accommodate batten clips and spacers and consequently can provide permanent spacing between the slabs to facilitate drainage for terraces on building structures in accordance with German FLL Guidelines;
2. The Base (Ø 197 mm, surface area is 30,500 mm²) able to accommodate a slope corrector (TP-SC: 0 to 5%);
3. The Extender: 4 pieces (Ø 131 x 143.5 mm) designed to join the other two elements.

Height of pedestal: 537-725 mm. Weight: 1.810 kg/pedestal. Resistant to UV, climate changes, sea salt and almost all chemicals. Temperature range: -30 °C to +90 °C. Delivery and installation is in accordance with manufacturer's instructions.

Technical illustration



Tools required

The required tools in this case vary according to the specified raised floor construction. However, a spirit level, tape measure and construction markers are most likely needed.

Packaging unit

TP 9 is delivered non-screwed in 3 separate corrugated boxes as follows:

1. The Top (PB-4 TOP): 24 pcs / box (600 x 400 x 440 mm, 9 kg)
2. The Base (PB-4 BASE): 24 pcs / box (600 x 400 x 440 mm, 10 kg)
3. The Extender (C1-PB-4): 24 pcs / box (600 x 400 x 440 mm, 8 kg)