

DC-F SS 50

DRAINAGE CHANNEL



ArchiGreen Roof Ltd
3 Patzay Pal Utca • Gyor • H-9024
Website: www.archigreenroof.com
E-mail: info@archigreenroof.com

DC-F SS 50 is a 50 mm high drainage channel comprising two elements:

A. The base, an elongated rectangular casing with an open underside, is made of UV-resistant polypropylene (PP).

B. The grating, mesh size 44x11 mm, is made of stainless steel and is removable.

The grating is recessed into the base and fits flush into it.

The grating in this case is the lid and can be easily taken out and is easy to clean.

The mesh pattern of the grating prevents slipping hazards.

DC-F fits best where a height of 50 mm is sufficient for the unit to fit flush into its surrounding.

Screws are made of stainless steel (Grade A2) and their fixing is in accordance with DIN 7505.

DC-F stands on 4 equidistant expanded PP load distribution footprints and can be walked upon.

Use

Usage of the DC-F range include:

- Channeling surface water away immediately
- Reducing the chance of slip hazards in case of frost or heavy rainfall

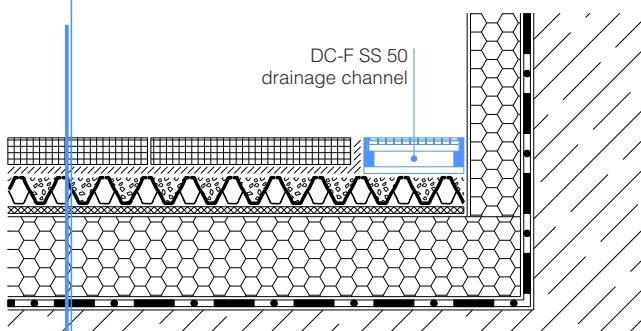
Application area

DC-F SS 50 is installed in front of the terrace doors or deep-set windows or along the base of exterior wall junctions provided that its 50 mm height fits flush into its surrounding. The DC-F range can be walked upon (Load class: A 15).

Size (L x W x H)	1000 x 150 x 50 mm
Weight	3.67 kg
Base	Polypropylene (PP)
Colour	RAL 7032 - pebble grey
Grating	Stainless steel
Surface of grating	1000 x 140 mm
Mesh size	44 x 11 mm
Banding / Edging bars	U-shaped section
Perforations of grating	German FLL Guidelines
Effective drainage area	90,345 mm ²
Screws (Grade)	Stainless steel (A2)
Screw fixing standard	German Standard DIN 7505
Load class	A 15
Surface / footprint	15,000 mm ²
Load distribution surface	60,000 mm ²
Environmental aspect	Fully recyclable

Installation example

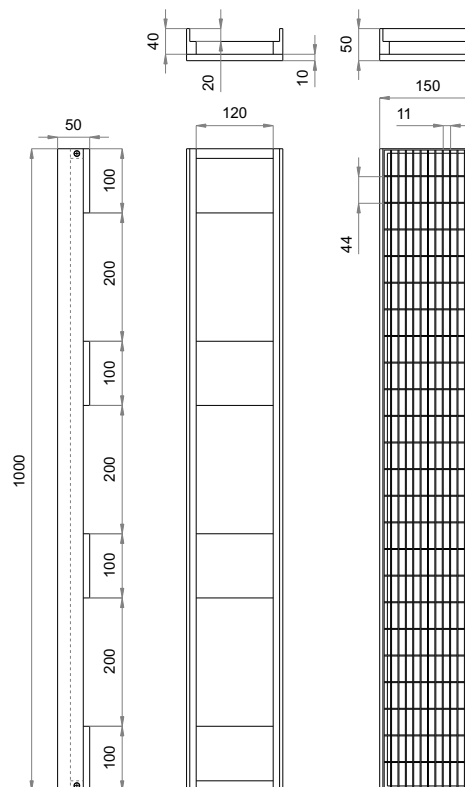
Frost-resistant concrete slabs
Crushed gravel bedding
FL 150 filter layer
SedumDrain® 25 water reservoir & drainage layer (infilled)
FL-I 125 inverted roof filter layer
Insulation
Root-resistant waterproofing
Structural deck



Specification suggestion

ArchiGreen® DC-F SS 50 fixed height drainage channel consists of a base made of UV-resistant polypropylene (PP), RAL colour 7032, and a removable stainless steel grating. DC-F SS 50 is to be installed in front of the terrace doors or deep-set windows or along the base of exterior wall junctions provided that its 50 mm height fits flush into its surrounding. Owing to its A 15 load class, the unit can be installed in pedestrian trafficked areas. Size and weight including grating: 1000 x 150 x 50 mm (L x W x H); 3.67 kg. Mesh size: 44 x 11 mm. Four equidistant distribution footprints are fixed to the underside via stainless steel screws (Grade: A2). Fastener fixing standard: German Standard DIN 7505. Delivery and installation is in accordance with manufacturer's instructions.

Technical illustration



Tools required

No special tools are required for the installation of this product.

Packaging unit

DC-F SS 50 can be despatched in corrugated boxes or on wooden pallets depending on the size of the order. 100 units of DC-F SS 50 being stretch wrapped would fit on a single EUR-pallet (1200x800 mm).